

Alaska Department of Fish and Game

Habitat Section
Southeast Region



114-25-10350

ADDITION and ROUTE CORRECTION

Water body name: West Swanson Creek

Survey date: 5/22/2024

Quad: Juneau A-4 and B-4

Species & Lifestage: CHp, COs, Pp

Upper Reach Latitude: 58.258616 **Longitude:** -135.182865

Survey crew: CD, DK, FC

Lower Reach Latitude: 58.211878 **Longitude:** -135.141899

Findings: We surveyed this cataloged stream using a backpack electrofisher and GPS and captured juvenile coho salmon and Dolly Varden. This large stream has quality fish habitat, a variety of small and large gravel substrate, riffles and side pools, and woody debris throughout. We only surveyed up to waypoint 141 due to time constraints, however excellent fish habitat likely continues upstream warranting future investigation. (Table 1; Figures 1–3).

Recommendations: Extend upper extent of Stream No. 114-25-10350 in the anadromous waters catalog to waypoint 141, add rearing coho salmon and Dolly Varden to species list and correct the channel to the field verified path (Figure 4).

Nomination: Pending

Table 1.–114-25-10350 survey data.

Waypoint	Latitude	Longitude	Notes	Stream Width ft	Stream Substrate	Habitat Features	Gradient %	Sample Effort	Sample Results
71	58.246794	-135.178204	Cascade that maybe a barrier. several rest pools throughout followed by steep chutes	50+	Bedrock		20-25		
108	58.246753	-135.178190							
109	58.247981	-135.176886		30-40	Large Gravel Small Gravel	Cut Banks	2-4	EF	2 CO 1 DV
110	58.248030	-135.176408						EF	3 CO 5 DV
111	58.247683	-135.177278							
138	58.253716	-135.178589	On main channel.	30-40	Small Gravel Sand	LWD	1-2		2 CO
141	58.258620	-135.182886	Stream continues on main channel, may remain good anadromous fish habitat for many miles up valley. Stream has LWD throughout with many fish habitat features.		Sand Small Gravel		1-2	EF	3 CO 1 DV



Figure 1.–Juvenile coho salmon captured at waypoint 141.



Figure 2.–Bridge at waypoint 111.



Figure 3.–Cascade falls at waypoint 71.

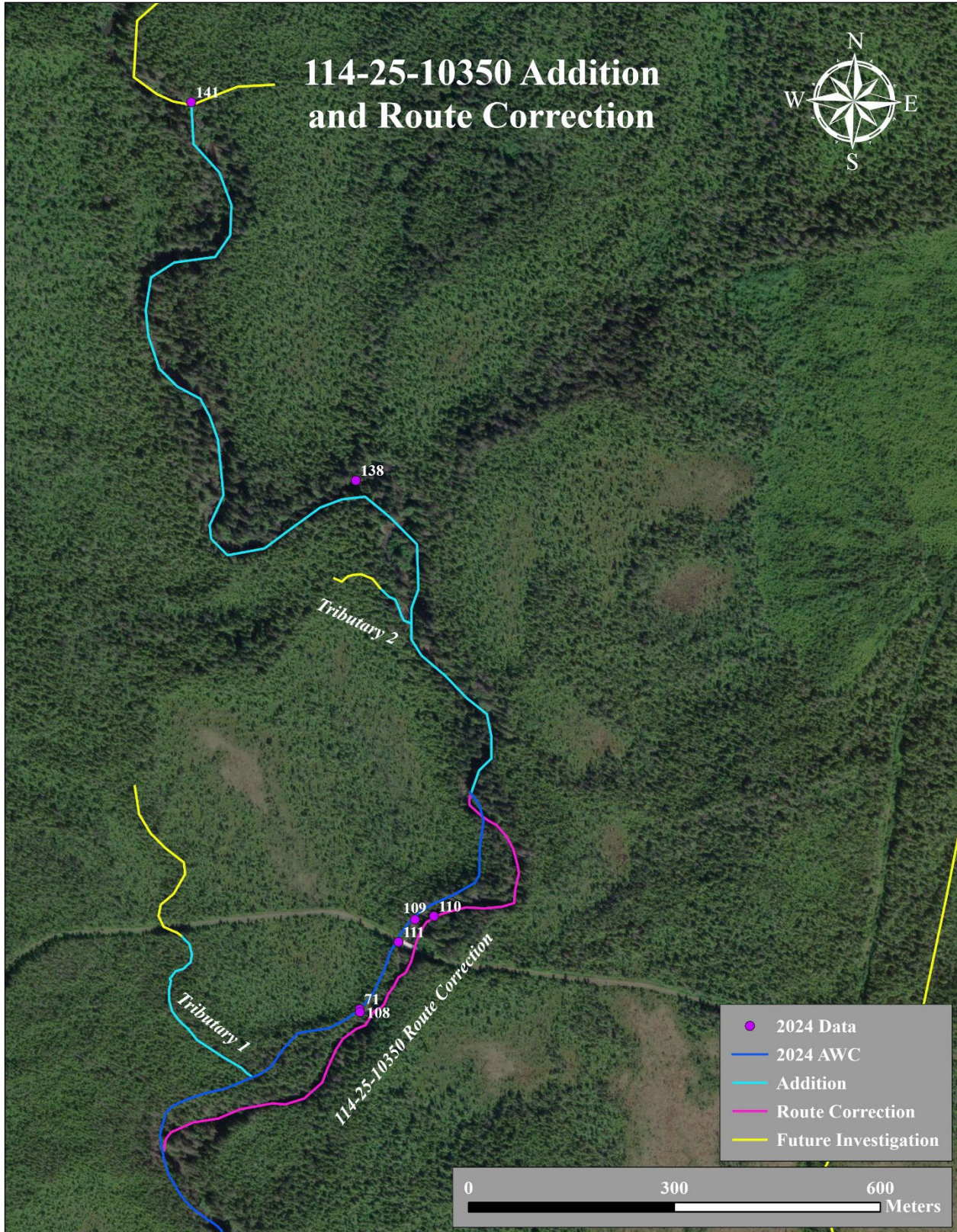


Figure 4.—Stream No. 114-25-10350 addition and route correction map.